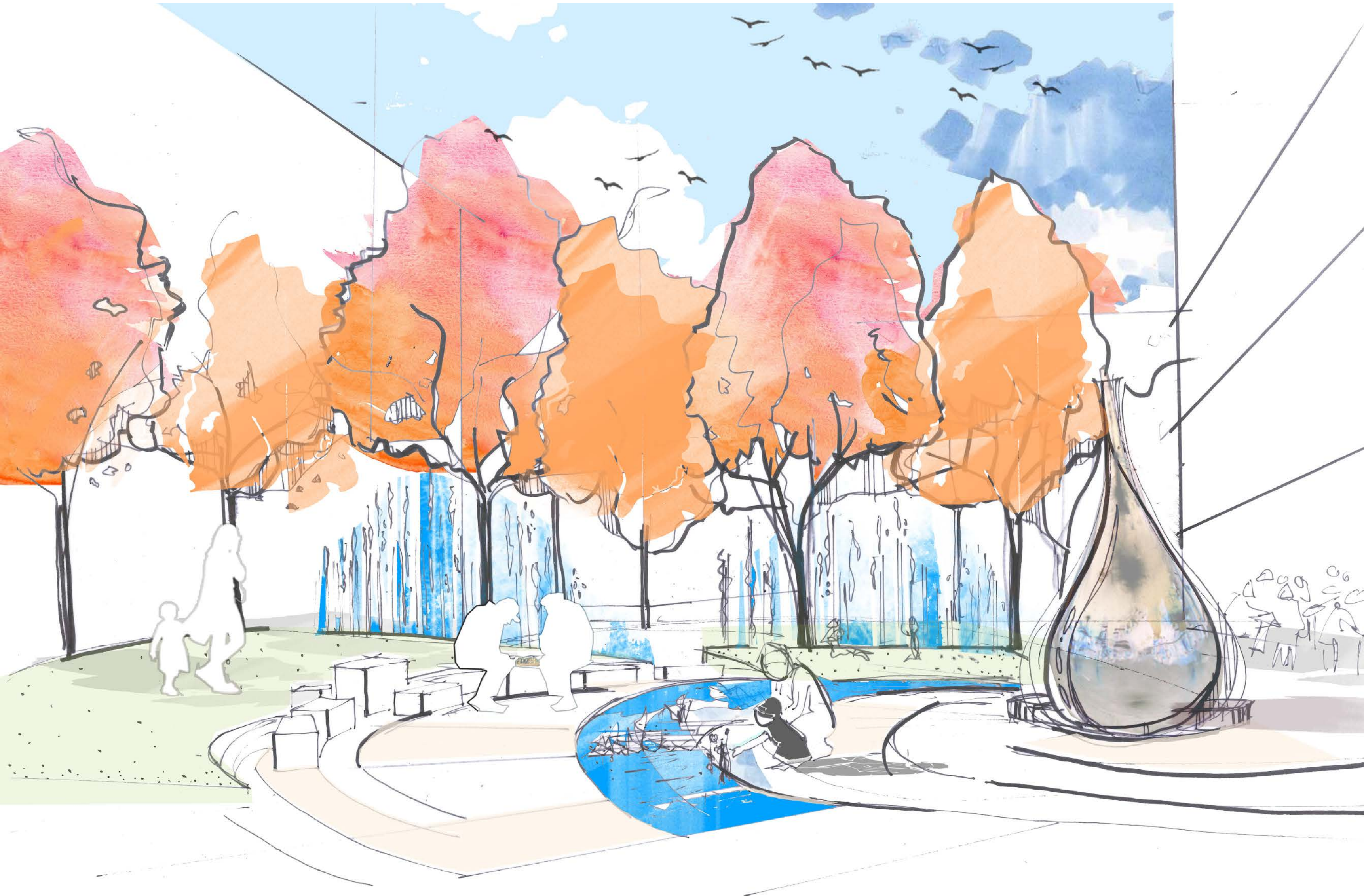


Potts Hill Seniors Living Village

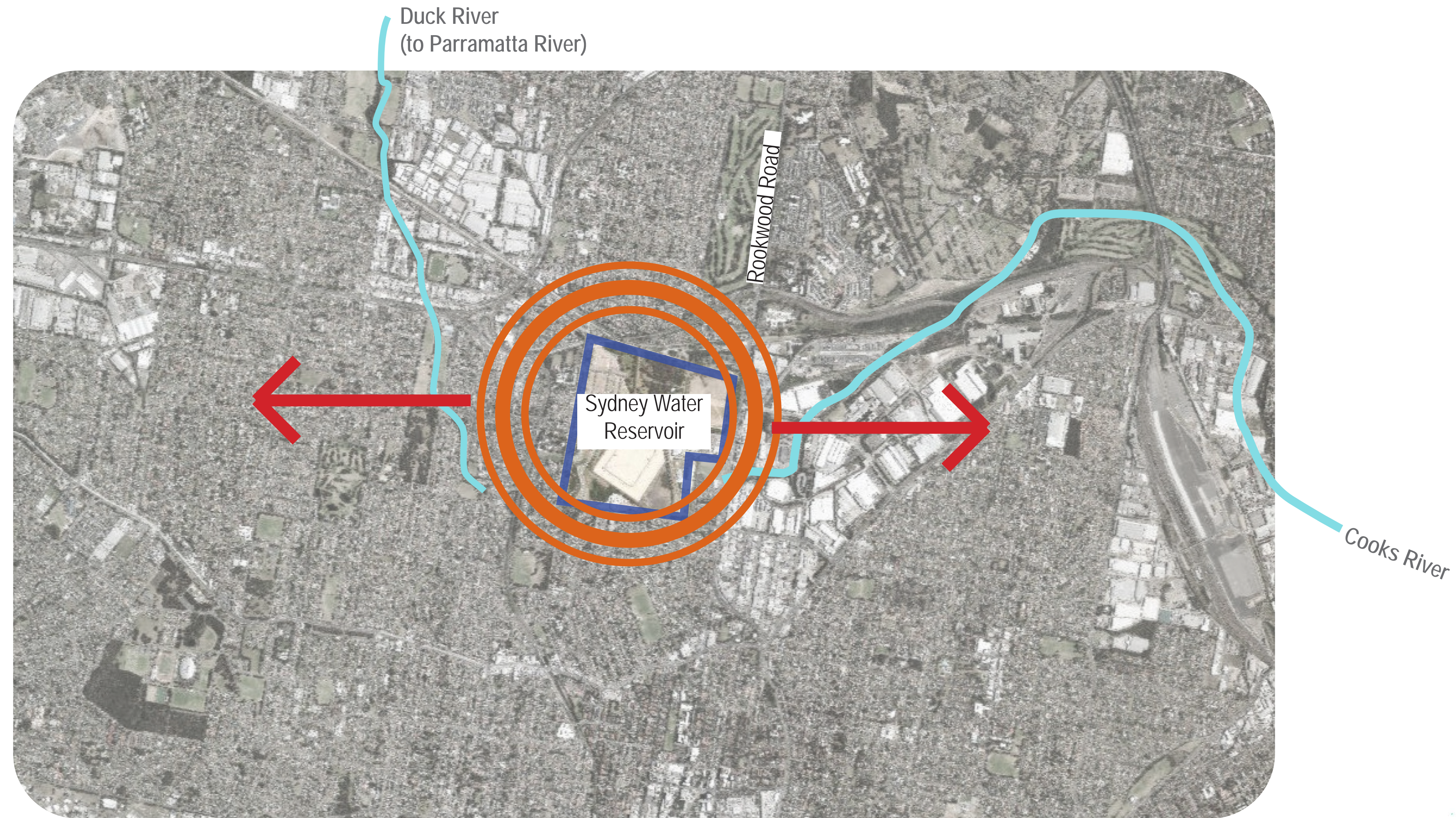
Revised Development Application Package

Contents

LA01 Cover sheet.....	p1
LA02 Site context and influences.....	p2
LA03 Design Development and values.....	p3
LA04 Site Plan	p4
LA05 Character Imagery.....	p5
LA06 Detail plan - North	p6
LA07 Detail plan - South.....	p7
LA08 Planting plan - North	p8
LA09 Planting plan - South	p9
LA10 Site Roof plan	p10
LA11 Site roof detail plan.....	p11
LA12 Site sections 1/2.....	p12
LA13 Site sections 2/2.....	p13
LA14 Tree retention and removal plan.....	p14
LA15 Illustrative perspectives	p15
LA16 Typical Details	p16



Cover sheet



Site context and setting



HISTORY OF THE SITE

The evolution of the Sydney Water site



Elevation and views

Utilising views to city and mountains



SYDNEY CATCHMENT

Site context and influences

Project: **Potts Hill Senior Living Village**

Project No: 17-048s

Client: Mushan Project Management

Revision: D

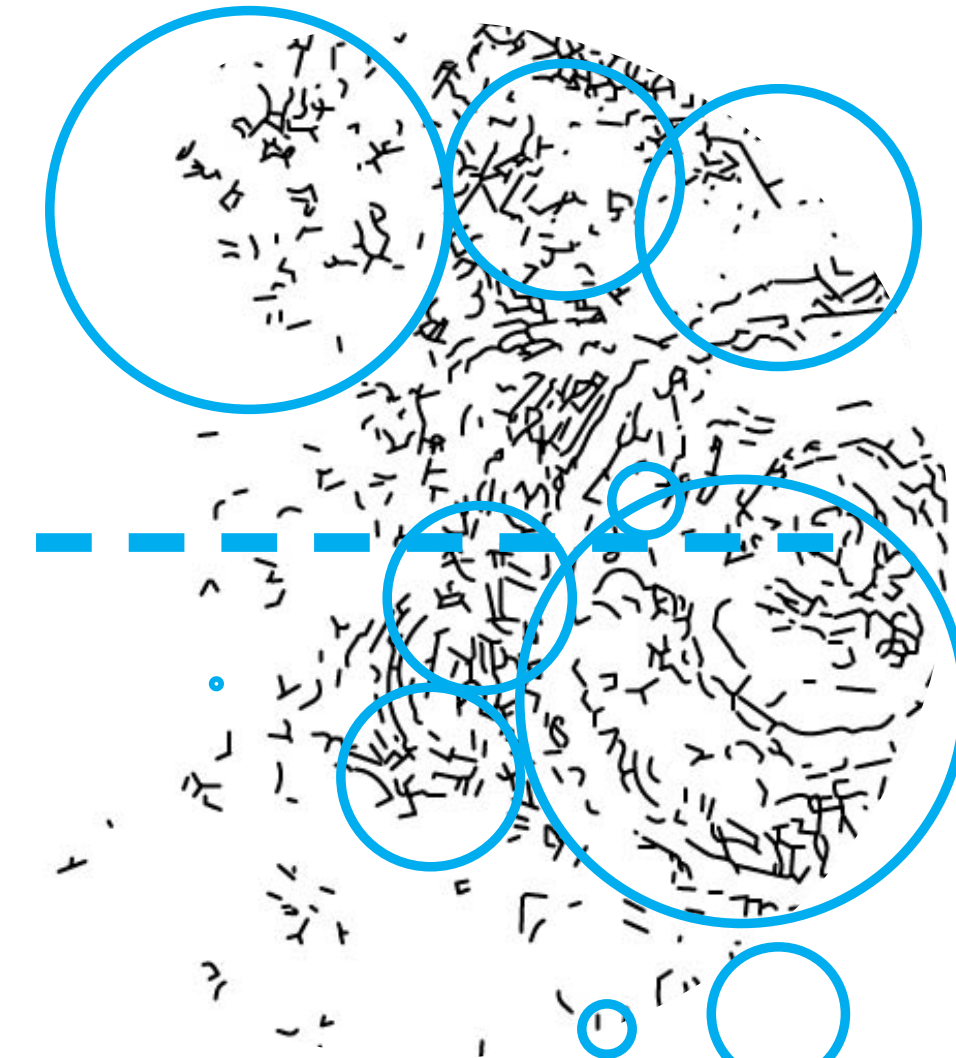
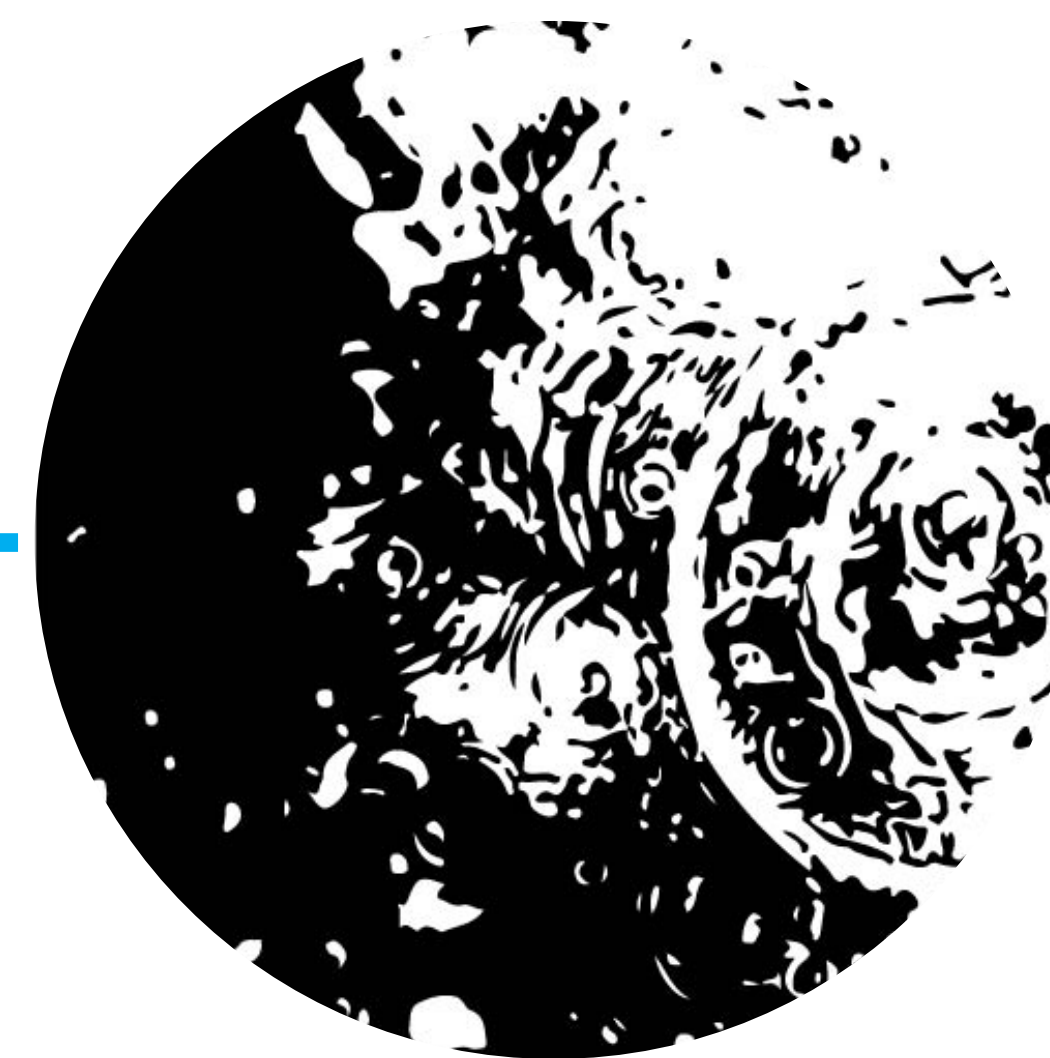
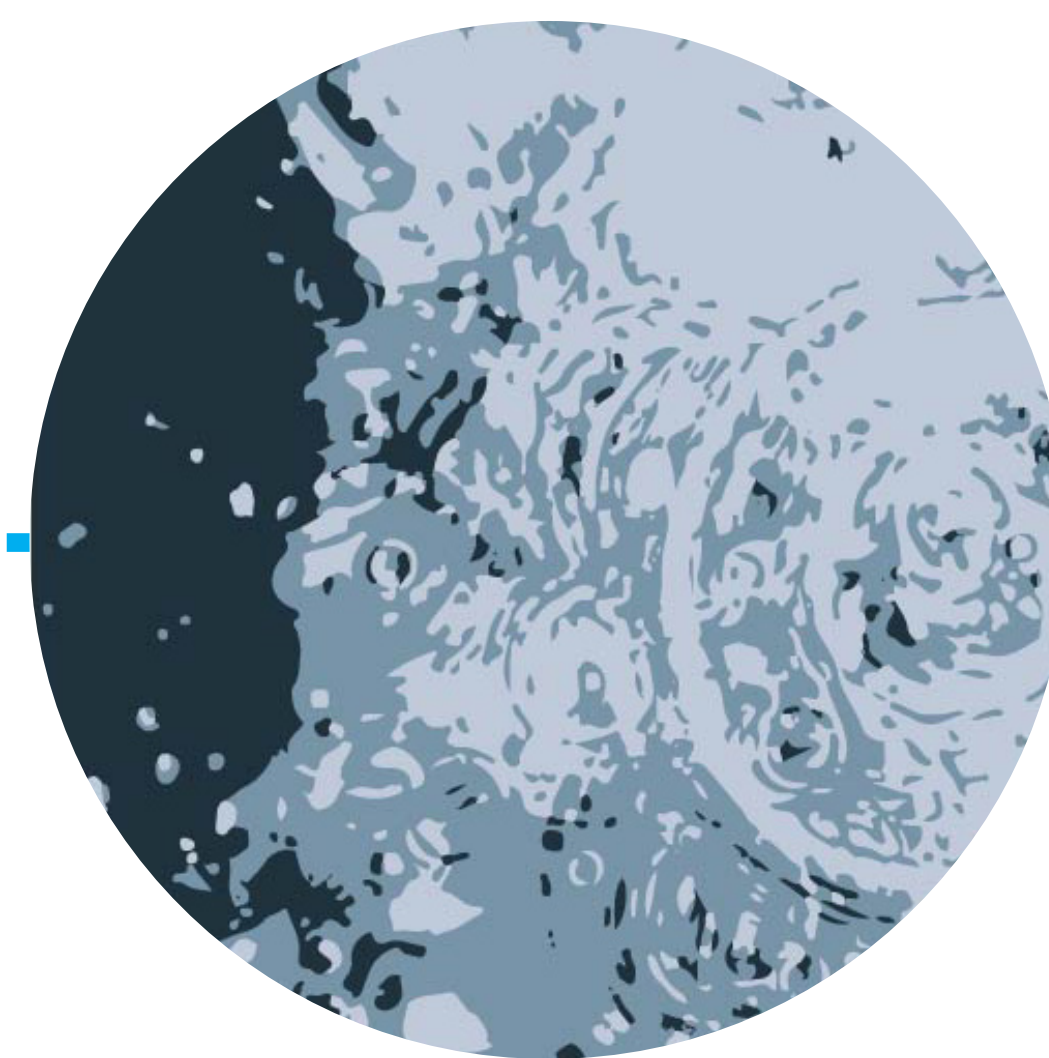
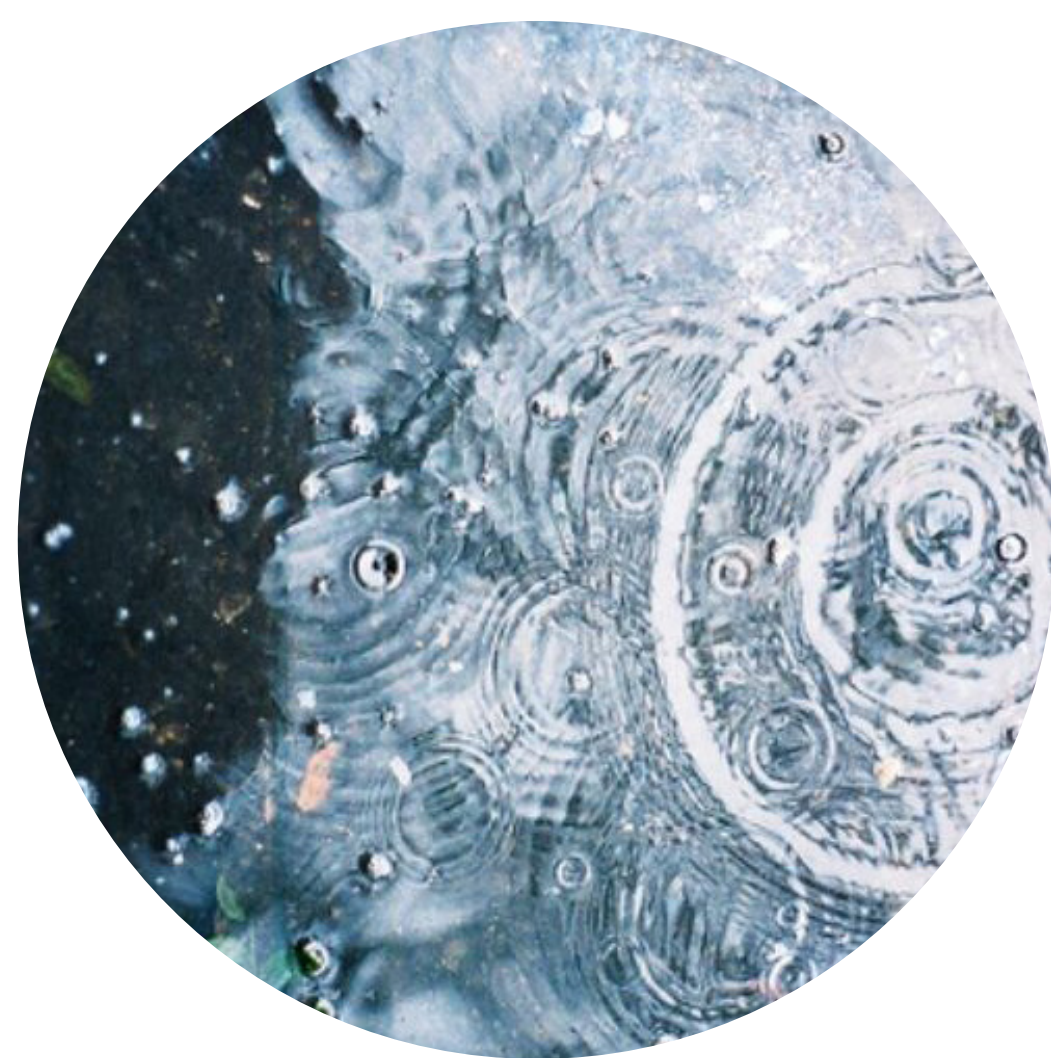
Date: 2/09/2021

Drawing no: LA02

TaylorBrammer



Taylor Brammer Landscape Architects Pty Ltd
218 Oxford Street, Woollahra NSW 2025
Tel: +61 2 9387 8855 Fax: +61 2 4267 4826
Email: sydney@taylorbrammer.com.au

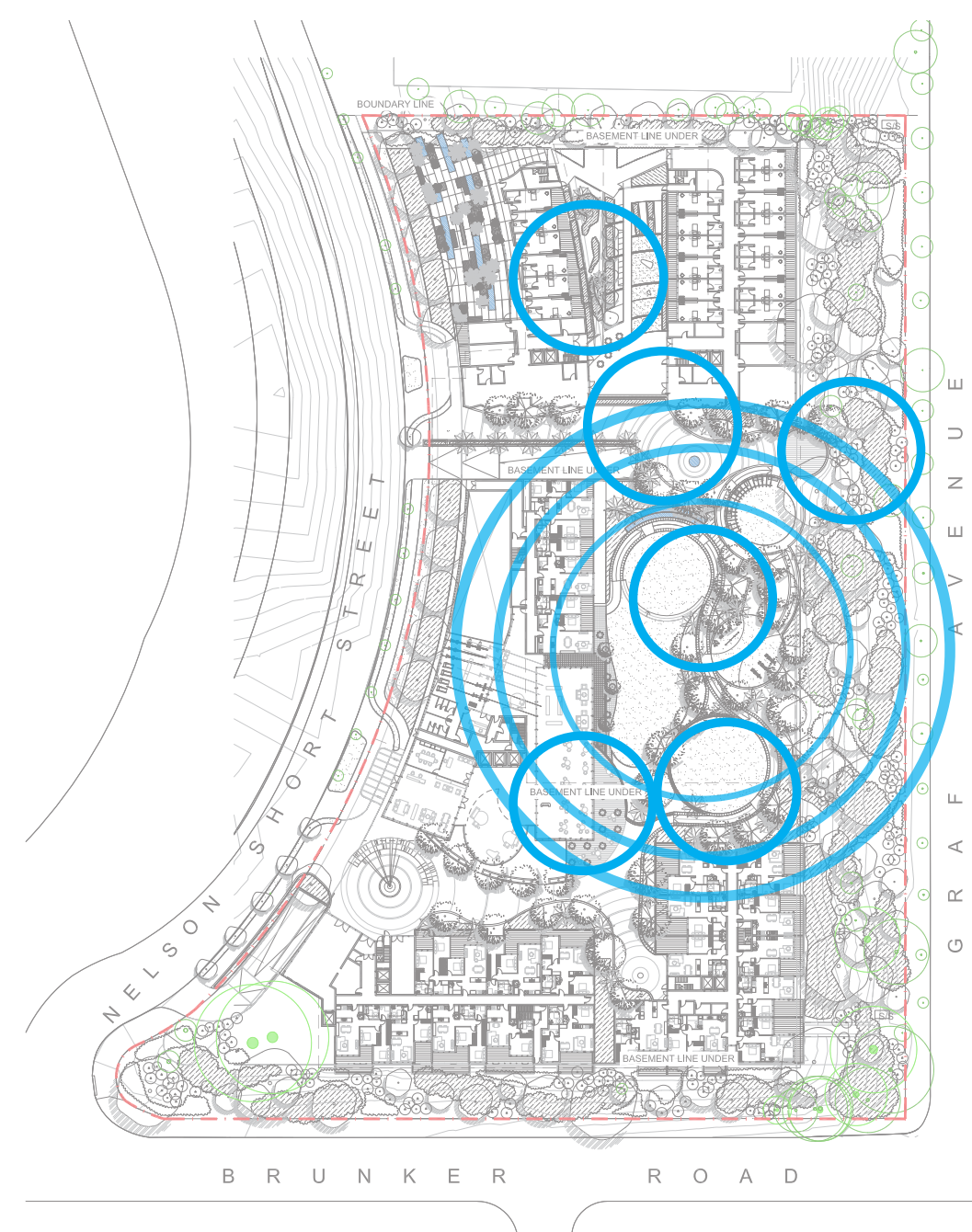


Concept development



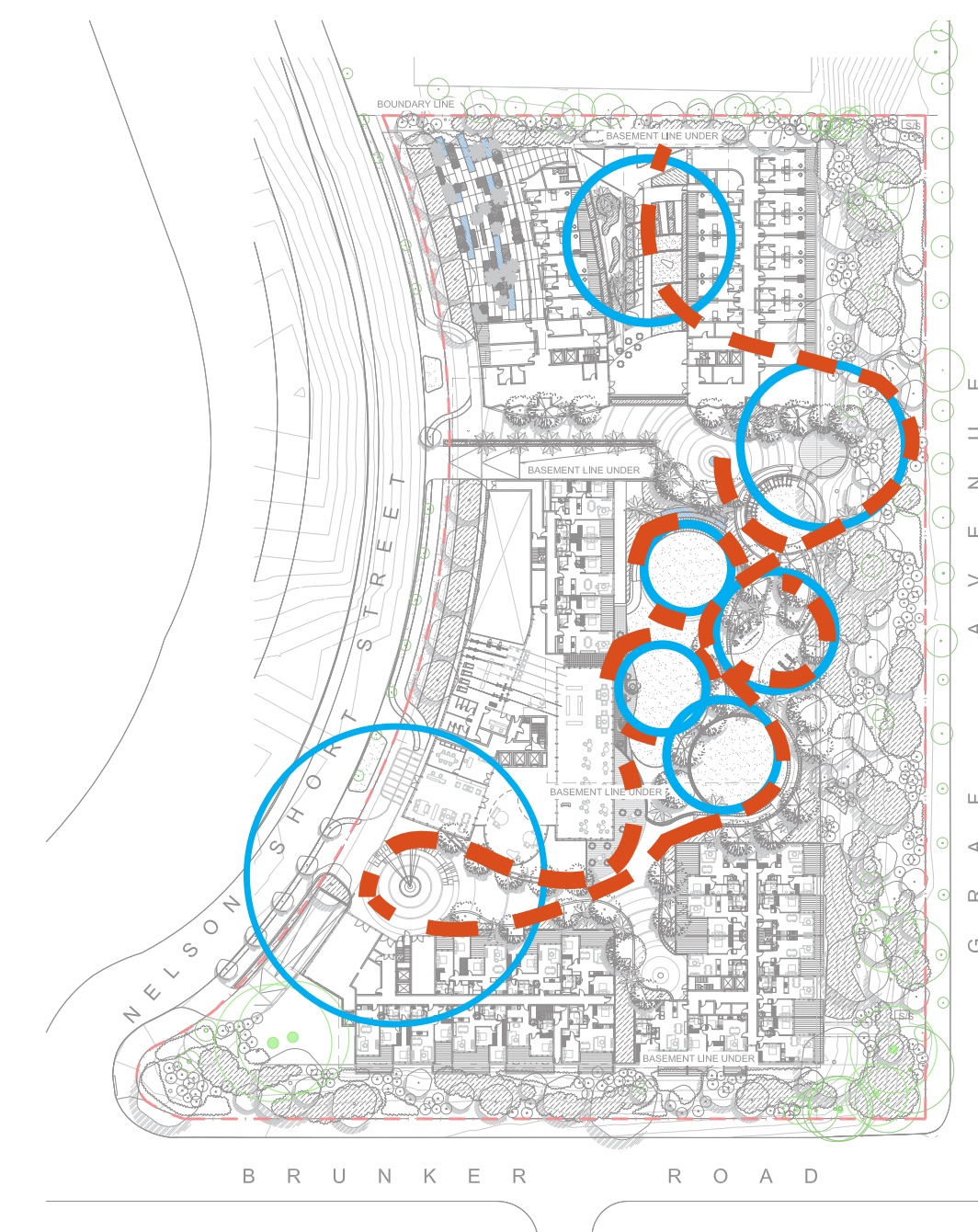
Entry Plaza

Communal gathering



Village Heart

Conversation points And Activity nodes



Residential Spine

Strong connection with nature

Design development and values

Project: **Potts Hill Senior Living Village**

Project No: 17-048s

Client: Mushan Project Management

Revision: D

Date: 2/09/2021

Drawing no: LA03

TaylorBrammer

Taylor Brammer Landscape Architects Pty Ltd
218 Oxford Street, Woollahra NSW 2025
Tel: +61 2 9387 8855 Fax: +61 2 4267 4826
Email: sydney@taylorbrammer.com.au

The external spaces provide a multitude of opportunities which encourage activity, conversation and integration within the community within the heritage setting of the Sydney water precinct

Village Heart

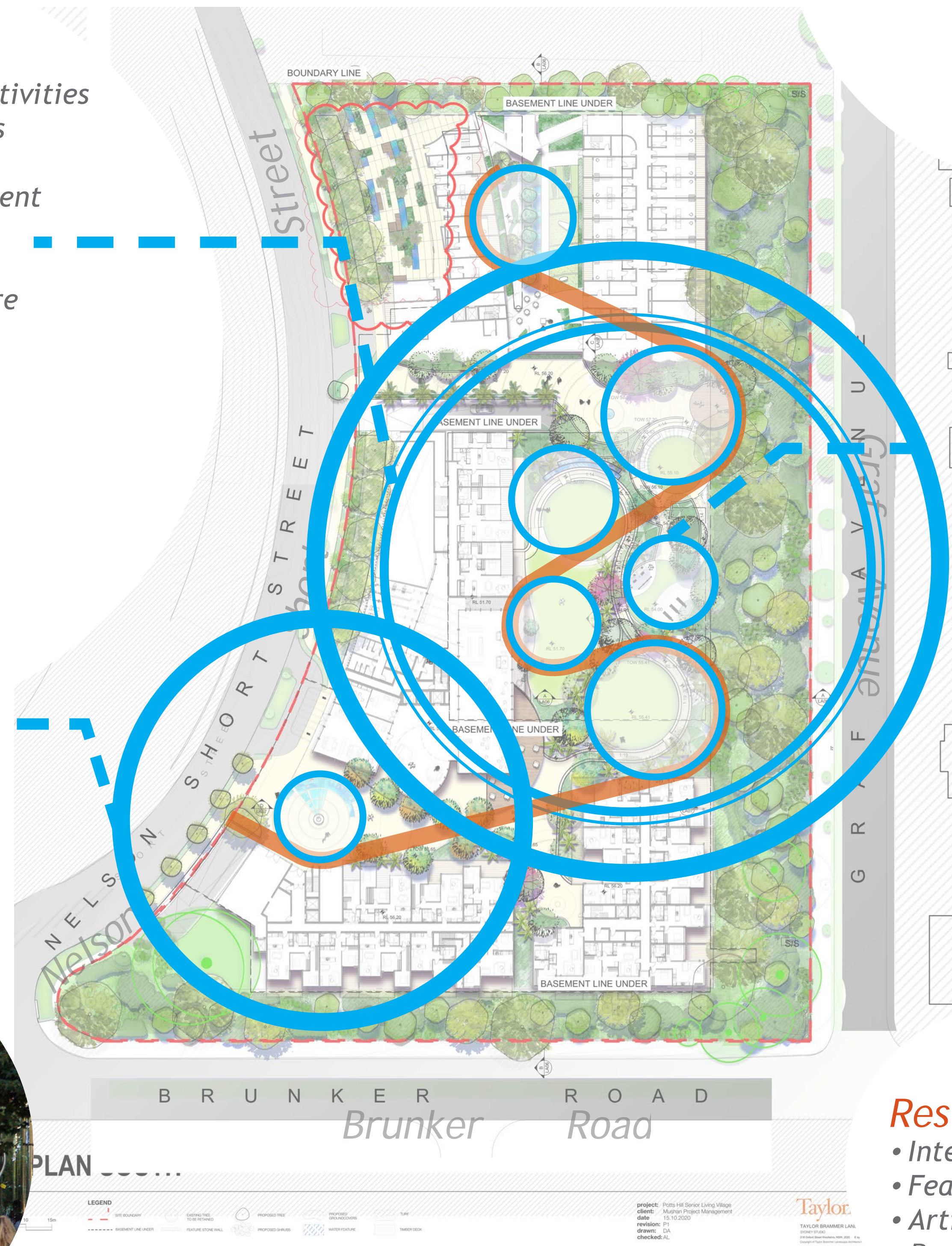
- Familiar surroundings and activities
- Private and communal spaces
- Community gardens
- Flexible open space for resident use and special events
- Lookouts
- Strong connection with nature

Entry Plaza

- Communal gathering and eating opportunities
- Active elements within plaza character
- Public art opportunities
- Open space

Residential spine

- Integration of Sydney Water elements
- Feature stone walls providing visual interest
- Articulated raised planters
- Residential garden spaces



Design development and values

Project: Potts Hill Senior Living Village

Project No: 17-048s

Client: Mushan Project Management

Revision: D

Date: 2/09/2021

Drawing no: LA05

TaylorBrammer

Taylor Brammer Landscape Architects Pty Ltd
218 Oxford Street, Woollahra NSW 2025
Tel: +61 2 9387 8855 Fax: +61 2 4267 4826
Email: sydney@taylorbrammer.com.au



Legend

- 1 Entry plaza and central sculpture
- 2 Ripple water feature
- 3 Ornamental tree grove
- 4 Suspended cafe deck
- 5 Sandstone escarpment walk
- 6 Timber deck lookout
- 7 Outdoor activity nodes
- 8 Cascading water wall with feature sculptural element at top
- 9 Feature palm avenue (complementing Sydney water heritage)
- 10 Bio banking vegetation offset
- 11 Sensory gardens as per previous DA
- 12 Shade tolerant lush planting, reflective water features and seating to building under croft
- 13 Screen planting

Site Plan

Project: **Potts Hill Senior Living Village**

Project No: 17-048s

Client: Mushan Project Management

Scale: 1:500@A1

Revision: D

Date: 2/09/2021

Drawing no: LA04

0 5 10 20 30m



TaylorBrammer

Taylor Brammer Landscape Architects Pty Ltd
218 Oxford Street, Woollahra NSW 2025
Tel: +61 2 9387 8855 Fax: +61 2 4267 4826
Email: sydney@taylorbrammer.com.au



Detail plan - North

Project: **Potts Hill Senior Living Village**

Project No: 17-048s

Client: Mushan Project Management

Scale: 1:250@A1

Revision: D

Date: 2/09/2021

Drawing no: LA06



TaylorBrammer

Taylor Brammer Landscape Architects Pty Ltd
218 Oxford Street, Woollahra NSW 2025
Tel: +61 2 9387 8855 Fax: +61 2 4267 4826
Email: sydney@taylorbrammer.com.au

Sheet Joinline

Sheet Joinline



Legend

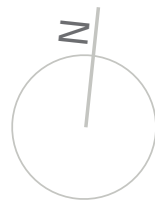
- 1 Entry plaza and central sculpture
- 2 Ripple water feature
- 3 Ornamental tree grove
- 4 Suspended cafe deck
- 5 Sandstone escarpment walk
- 6 Open turf activity node
- 7 Open pavilion with outdoor seating, games
- 9 Feature palm avenue (complementing Sydney water heritage)
- 10 Bio banking vegetation offset

Detail plan - South

Project: **Potts Hill Senior Living Village**
Project No: 17-048s
Client: Mushan Project Management

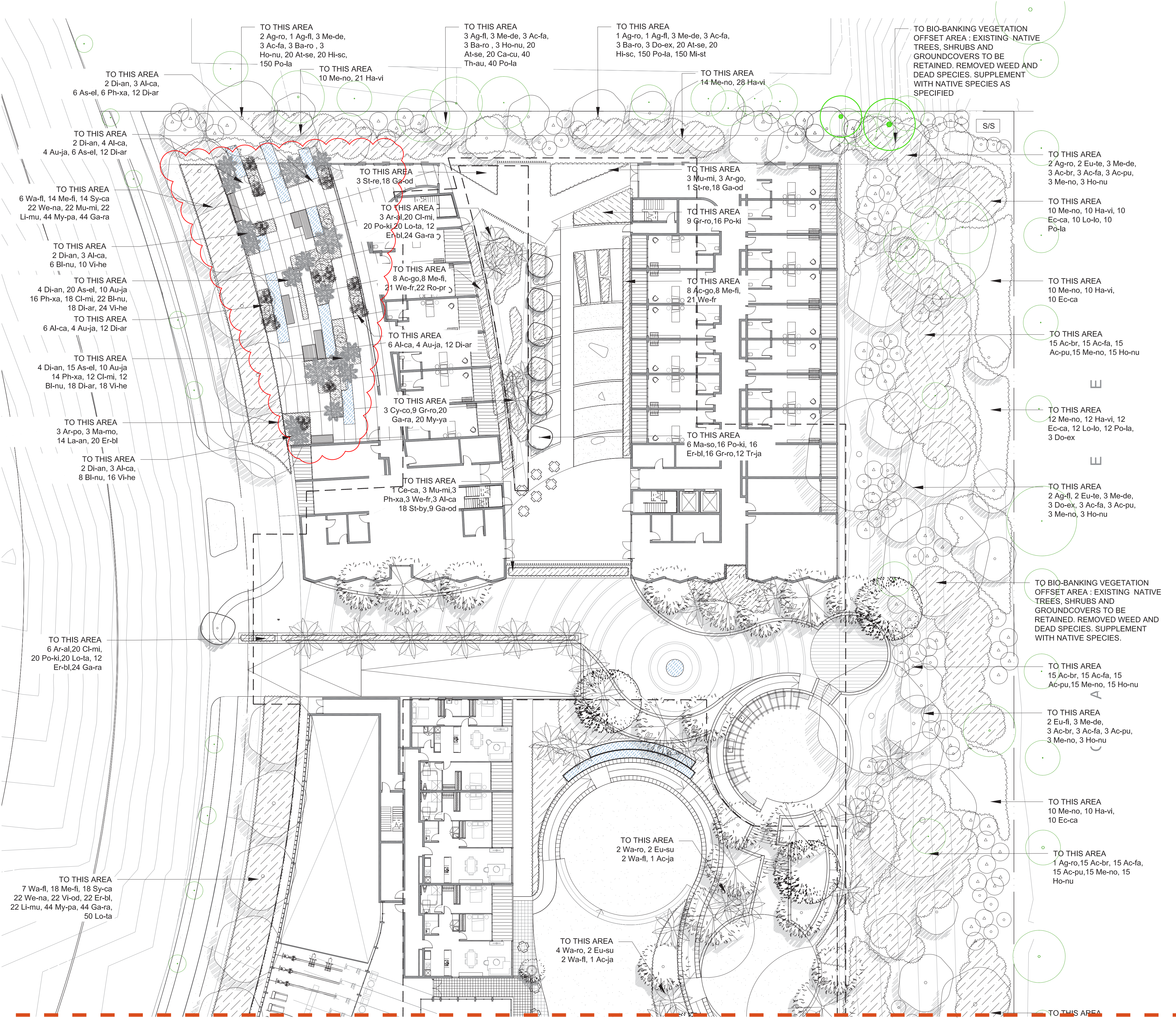
Scale: 1:250@A1
Revision: D
Date: 2/09/2021

Drawing no: LA07



TaylorBrammer

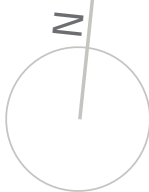
Taylor Brammer Landscape Architects Pty Ltd
218 Oxford Street, Woollahra NSW 2025
Tel: +61 2 9387 8855 Fax: +61 2 4267 4826
Email: sydney@taylorbrammer.com.au

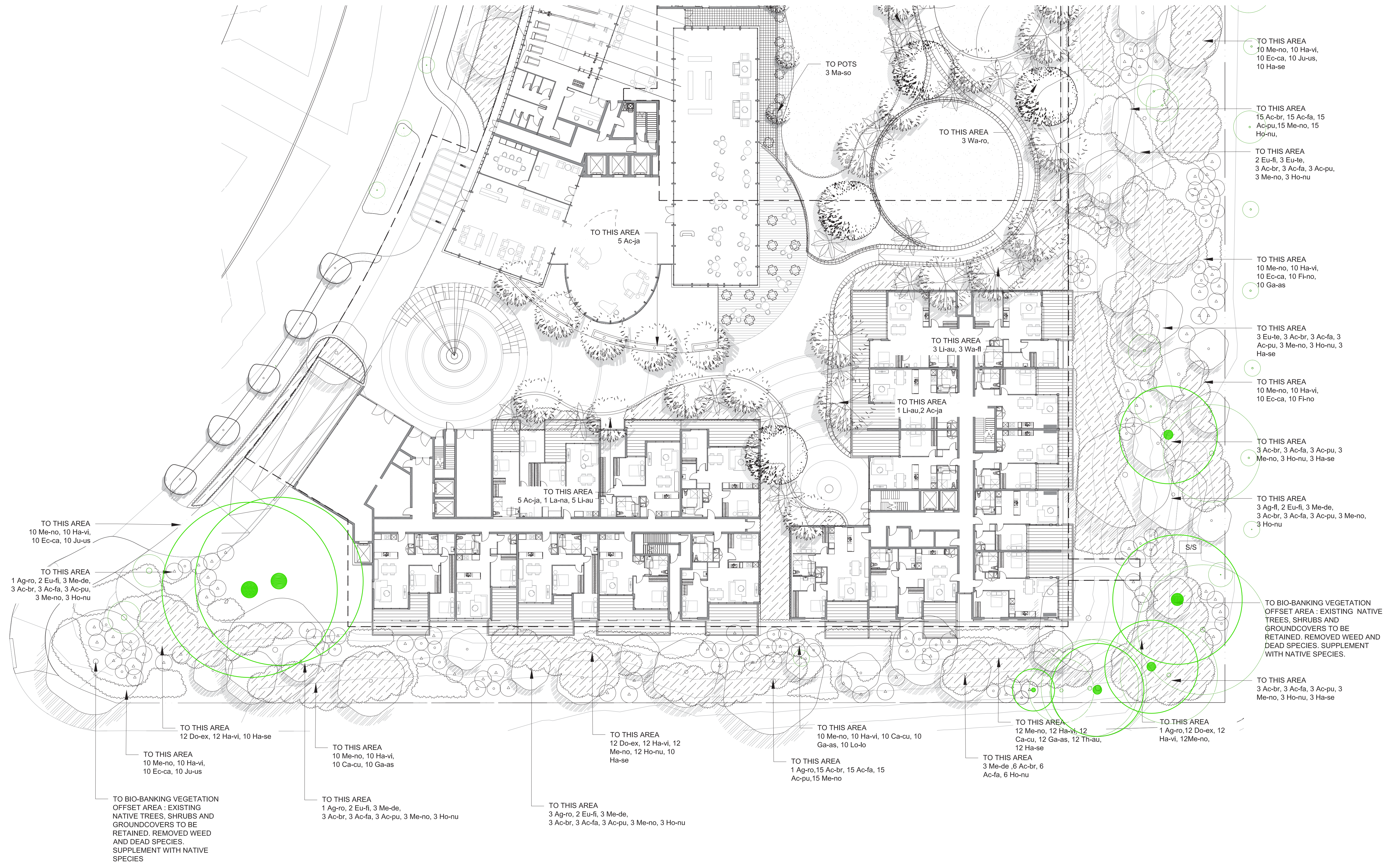


PLANT SCHEDULE

ID	BOTANICAL NAME	COMMON NAME	MATURE HEIGHT	POT SIZE	QTY
TREES					
Ac-ja	<i>Acer japonicum</i> 'vitifolium'	Japanese Maple	5m	100L	9
Ac-cr	<i>Acer platanoides</i> 'Crimson Sentry'	Purple Norway maple	6m	100L	1
Ac-pl	<i>Acer palmatum</i> 'Dissectum Inaba Shidare'	Weeping Maple	2m	45L	2
Ar-al	<i>Archontophoenix Alexanderae</i>	Alexander Palm	20m	100L	9
Ce-ca	<i>Cercis canadensis</i> 'Forest Pansy'	Judas Tree	5m	75L	1
Ce-av	<i>Cercis chinensis</i> 'Avondale'	Judas Tree	3m	45L	4
Ci-el	<i>Citrus lemon</i> 'Eureka'	Eureka Lemon tree	4m	45L	1
Ci-em	<i>Citrus reticulata</i> 'Emperor'	Emperor Mandarin	4m	45L	1
Ci-lm	<i>Citrus lemon</i> 'Meyer'	Meyer Lemon tree	4m	45L	1
Cy-co	<i>Cyathea cooperi</i>	Soft tree fern	6m	1.5m TRUNK	6
Eu-su	<i>Eucalyptus</i> 'Summer Red'	Summer Red	6m	100L	5
La-na	<i>Lagerstroemia indica</i> x <i>L. fauriei</i> 'Natchez'	Crape Myrtle	8m	100L	2
Li-tu	<i>Linodendron tulipifera</i>	Tulip Tree	13m	100L	4
Ma-io	<i>Malus ioensis</i> 'Plena'	Crab Apple	6m	75L	11
Ma-so	<i>Magnolia soulangeana</i>	Magnolia	3m	100L	15
Pa-pe	<i>Parrotia persica</i>	Persian Witchhazel	7m	75L	1
Wa-fl	<i>Waterhousia floribunda</i> 'Green Avenue'	Weeping Lilly Pilly	15m	100L	15
Wa-ro	<i>Washingtonia robusta</i>	Mexican Fan Palm	25m	100L	17
SHRUBS					
Ac-go	<i>Acmena</i> 'Goodbye Neighbours'	Lilly Pilly	3m	300mm	32
Ar-po	<i>Artemisia</i> 'Powis Castle'	Silver Sage	0.6m	300mm	23
Al-ca	<i>Alpinia caerulea</i> 'Red Back'	Native Ginger	2m	300mm	61
As-el	<i>Aspidistra elatior</i>	Cast Iron Plant	1	200mm	47
Au-ja	<i>Aucuba Japonica</i>	Japanese laurel	2	300mm	32
Di-an	<i>Dicksonia antarctica</i>	Woolly Tree Fern	2m	45L	16
Gr-ro	<i>Grevillea rosmarinifolia</i> 'Crimson Villea'	Grevillea	0.8m	300mm	34
Hi-su	<i>Hibiscus</i> 'Surfdrift'	Hibiscus	1.5m	300mm	6
Ma-mo	<i>Mahonia x wagneri</i> 'Moseri'		0.9m	300mm	44
Me-fi	<i>Metrosideros</i> 'Fiji'	New Zealand Christmas Bush	3m	300mm	87
Mu-mi	<i>Murraya</i> 'Min-A-Min'	Mini Orange Jessamine	1m	300mm	85
Ph-xa	<i>Philodendron</i> 'Xanadu'	Xanadu	0.7m	300mm	78
St-re	<i>Strelitzia reginae</i>	Bird of paradise	1.5m	300mm	16
Sy-ca	<i>Syzygium</i> 'Cascade'	Pink Flowering Lilly Pilly	3m	300mm	61
Vi-od	<i>Viburnum odoratissimum</i> 'Emerald Lustre'	Emerald Lustre Viburnum	2.3m	300mm	30
We-fr	<i>Westringia fruticosa</i>	Coastal rosemary	1m	300mm	117
We-na	<i>Westringia</i> 'Naringa'	Rosemary	1.2m	300mm	44
GROUNDCOVERS					
Bl-nu	<i>Blechnum nudum</i>	Blechnum	0.75	150mm	48
Cl-mi	<i>Clivia miniata</i>	Kaffir Lily	0.4m	150mm	84
Di-ar	<i>Dichondra Argentea</i>	Silver Falls	0.15	150mm	67
Er-bl	<i>Eremophila glabra prostrata</i> 'Blue Horizon'	Emu bush	0.25m	150mm	150
Ga-od	<i>Galium odoratum</i>	Sweet-scented bedstraw	0.2m	150mm	115
Ga-ra	<i>Gardenia radicans</i>	Rock gardenia	0.5m	150mm	198
La-an	<i>Lavandula angustifolia</i>	Lavender	0.3-0.9m	150mm	50
Li-mu	<i>Liriope Muscari</i> 'Evergreen Giant'	Turf Lily	0.6m	150mm	128
Lo-ta	<i>Lomandra</i> 'Tanika'	Lomandra	0.5-0.6m	150mm	142
My-ya	<i>Myoporum parvifolium</i> 'Yareena'	Groundcover Myoporum	0.1m	150mm	72
Po-ki	<i>Poa poiformis</i> 'Kingsdale'	Tussock Grass	0.45m	150mm	72
Ro-pr	<i>Rosmarinus officinalis</i> 'Prostrate'	Rosemary	0-0.5m	150mm	63
Tr-ja	<i>Trachelospermum jasminoides</i>	Star Jasmine	-	150mm	60
St-by	<i>Stachys byzantina</i>	Lamb's-ear	0.3	150mm	100
Vi-he	<i>Viola hederacea</i>	Native Violet	0.3	150mm	68
SUCCULENT GARDEN					
Al-mo	<i>Aloe</i> 'Moonglow'	Aloe plant	0.8	150mm	10
Cr-ov	<i>Crassula ovata</i>	Jade Plant	0.7	150mm	10
Co-ha	<i>Cotyledon</i> 'Happy Young Lady'	Plakkie	0.6	150mm	20
Ec-el	<i>Echeveria elegans</i>	Mexican Gem	0.3	150mm	30
Ec-no	<i>Echeveria nodulosa</i> 'Painted Beauty'	Painted Lady	0.6	150mm	10
Ka-th	<i>Kalanchoe thyrsiflora</i>	Flapjacks	0.4	150mm	28
Se-sp	<i>Sedum spectabile</i> 'Autumn Joy'	Autumn Joy sedum	0.6	150mm	21
Se-ro	<i>Senecio rowleyanus</i>	String of pearls	-	150mm	42
Se-ma	<i>Senecio mandraliscae</i>	Blue Chalk Sticks	0.45m	150mm	20
BIO-BANKING VEGETATION					
TREES					
Ag-ro	<i>Agathis robusta</i>	Kauri Pine	30m	200L	14
Ag-fl	<i>Angophora floribunda</i>	Rough barked apple	20m	200L	10
Eu-fi	<i>Eucalyptus fibrosa</i>	Red ironbark	15m	200L	12
Eu-te	<i>Eucalyptus tereticornis</i>	Forest red gum	35m	200L	10
Me-de	<i>Melaleuca decora</i>	White Feather Honey myrtle	7m	200L	29
SHRUBS					
Ac-br	<i>Acacia brownii</i>	Heath Wattle	1m	300mm	114
Ac-fa	<i>Acacia falcata</i>	Hickory Wattle	4m	300mm	105
Ac-pu	<i>Acacia pubescens</i>	Downy Wattle	2.5m	300mm	110
Ba-ro	<i>Banksia robur</i>	Swamp Banksia	2m	300mm	100
Do-ex	<i>Doryanthes excelsa</i>	Gymea Lily	1.5m	300mm	54
Ha-vi	<i>Hardenbergia violacea</i>	Purple Coral Pea	-	300mm	212
Ha-se	<i>Hakea sericea</i>	Needlebush	1m	300mm	51
Ho-nu	<i>Homalanthus nutans</i>	Native Bleeding Heart	4m	300mm	105
Me-no	<i>Melaleuca nodosa</i>	Prickly Paperbark	2m	300mm	199
GRASS AND GROUNDCOVERS					
At-se	<i>Atriplex semibaccata</i>	Australian saltbush	300mm	150mm	60
Ca-cu	<i>Calotis cuneifolia</i>	Burr Daisy	200mm	150mm	52
Hi-sc	<i>Hibbertia scandens</i>	Golden Guinea Flower	300mm	150mm	40
Ec-ca	<i>Echinopogon caespitosus</i>	Bushy Hedgehog Grass	300mm	150mm	92
Fi-no	<i>Ficinia nodosa</i>	Knobby Club Rush	300mm	150mm	20
Ga-as	<i>Gahnia aspera</i>	Saw Egge	600mm	150mm	42
Ju-us	<i>Juncus usitatus</i>	Juncus	500mm	150mm	30
Lo-lo	<i>Lomandra longifolia</i>	Spiny-headed mat-rush	300mm	150mm	32
Mi-st	<i>Microlaena stipoides</i>	Weeping Grass	500mm	150mm	150
Po-la	<i>Poa labillardieri</i>	Tussock Grass	400mm	150mm	362
Th-au	<i>Themeda australis</i>	Kangaroo Grass	400mm	150mm	52

Sheet Joinline
Planting plan - North





Planting plan - South

Project: Potts Hill Senior Living Village

Scale: 1:250@A1

Project No: 17-048s

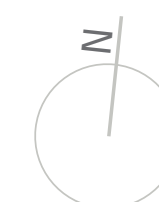
Revision: D

Client: Mushan Project Management

Date: 2/09/2021

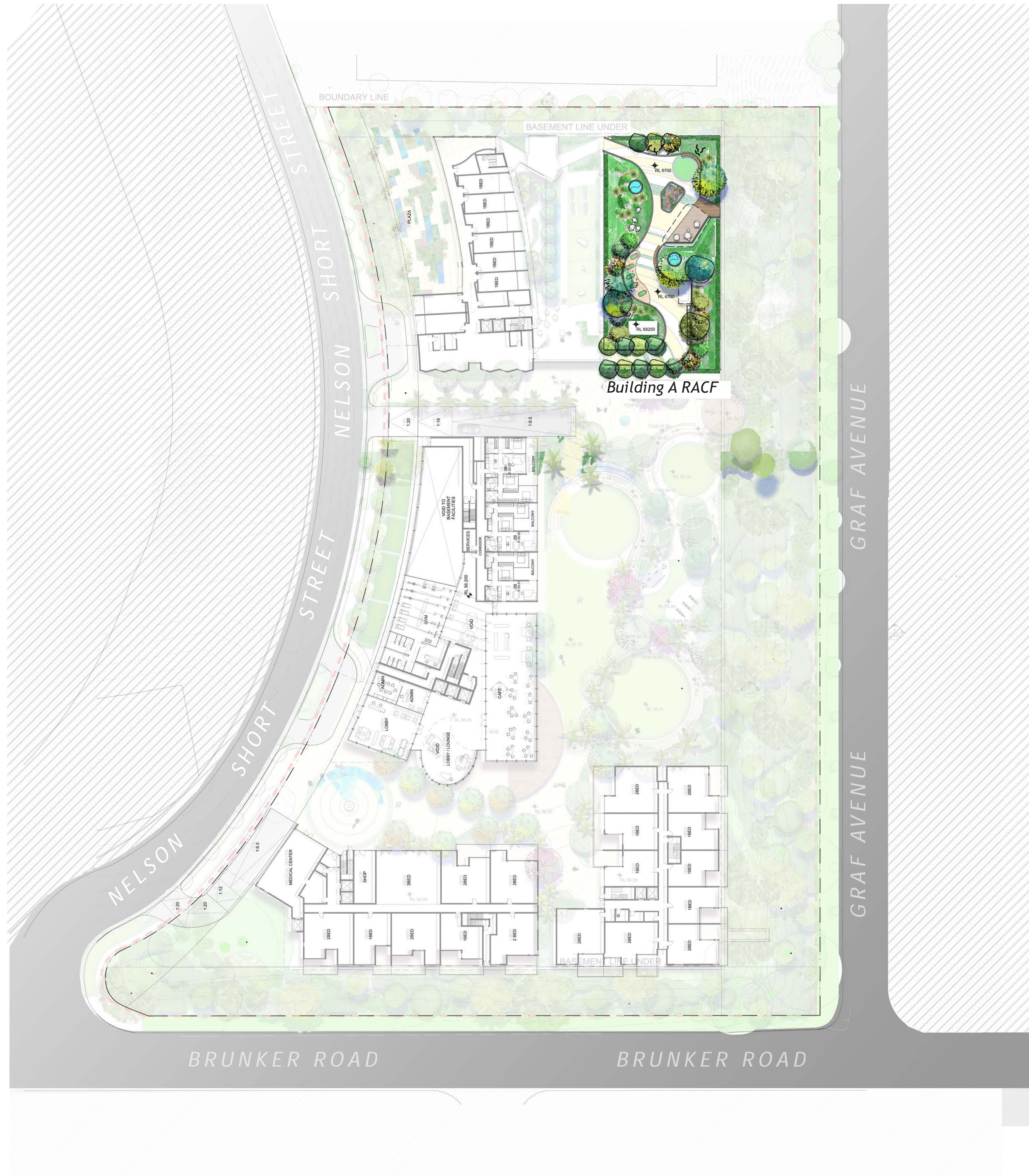
Drawing no: LA09

0 2.5 5 10 15m



TaylorBrammer

Taylor Brammer Landscape Architects Pty Ltd
218 Oxford Street, Woollahra NSW 2025
Tel: +61 2 9387 8855 Fax: +61 2 4267 4826
Email: sydney@taylorbrammer.com.au



Roof Garden Site Plan

Project: **Potts Hill Senior Living Village**
Project No: 17-048s
Client: Mushan Project Management

Scale: 1:500@A1
Revision: D
Date:2/09/2021
Drawing no: LA10



TaylorBrammer

Taylor Brammer Landscape Architects Pty Ltd
218 Oxford Street, Woollahra NSW 2025
Tel: +61 2 9387 8855 Fax: +61 2 4267 4826
Email: sydney@taylorbrammer.com.au



Roof Garden Detail plan

Project: **Potts Hill Senior Living Village**

Project No: 17-048s

Client: Mushan Project Management

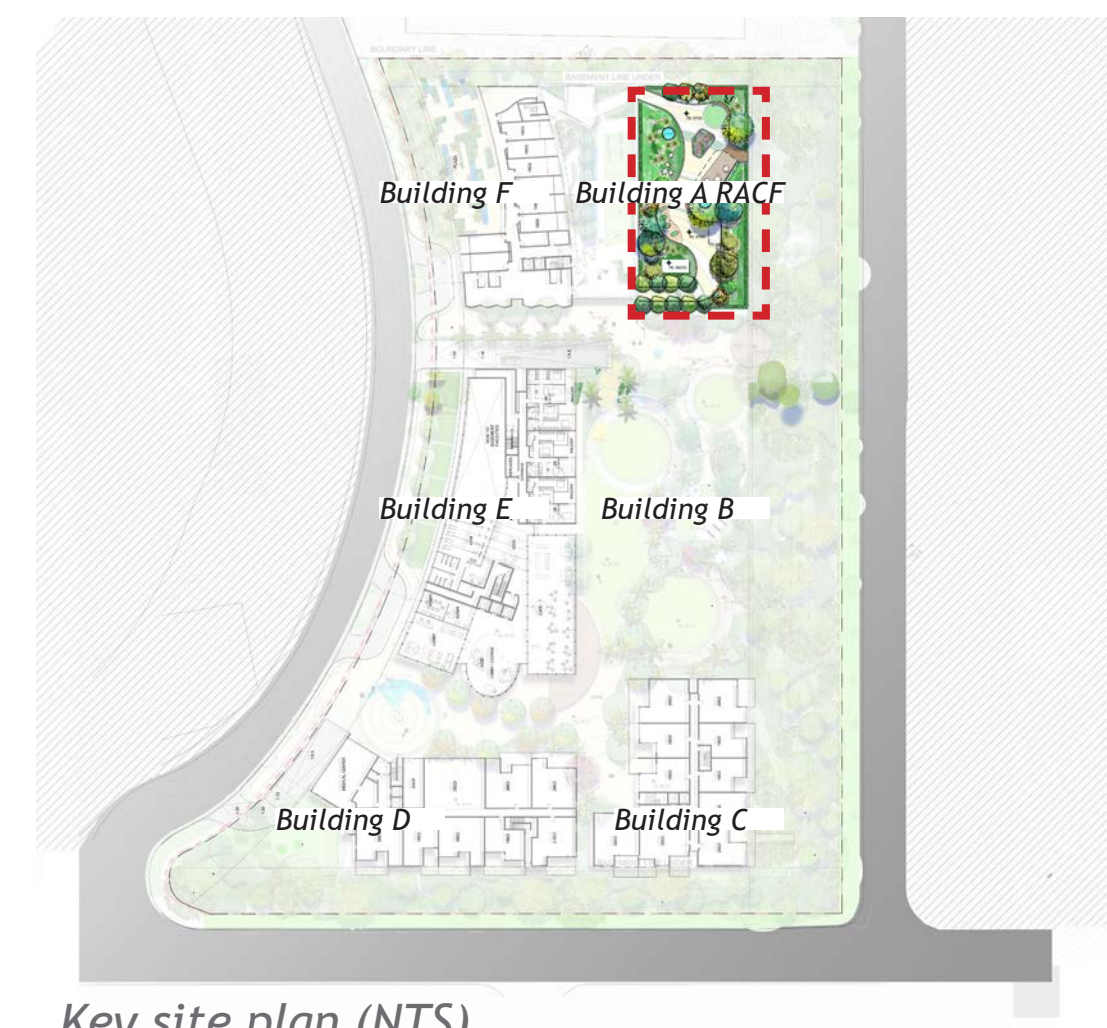
Scale: 1:250 @A1

Revision: D

Date: 2/09/2021

Drawing no: LA11

0 5 10 20 30m



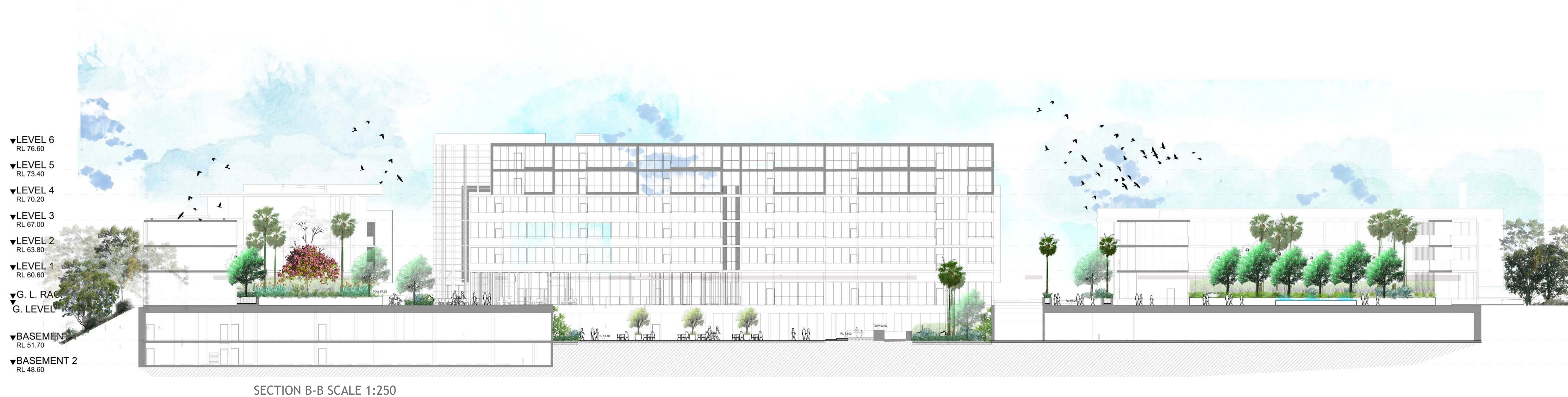
Key site plan (NTS)

Legend

- 1 Welcoming tree grove
- 2 Seating with shading tree
- 3 Feature tree
- 4 Calm morning garden accented by sculptures and integrated seating
- 5 Viewing platform with views to Sydney CBD
- 6 Raised planter with sensory planting
- 7 Succulent garden with central water feature
- 8 Hedge planting
- 9 Elevated timber deck with shade structure over
- 10 Raised veg garden on gravel
- 11 Water feature/Sound element to garden
- 12 Mens shed

TaylorBrammer

Taylor Brammer Landscape Architects Pty Ltd
218 Oxford Street, Woollahra NSW 2025
Tel: +61 2 9387 8855 Fax: +61 2 4267 4826
Email: sydney@taylorbrammer.com.au



Site section elevations

Project: **Potts Hill Senior Living Village**

Project No: 17-048s

Client: Mushan Project Management

Scale: As shown @A1

Revision: D

Date: 2/09/2021

Drawing no: LA12



TaylorBrammer

Taylor Brammer Landscape Architects Pty Ltd
218 Oxford Street, Woollahra NSW 2025
Tel: +61 2 9387 8855 Fax: +61 2 4267 4826
Email: sydney@taylorbrammer.com.au



SECTION C-C SCALE 1:100



SECTION D-D SCALE 1:100

Entry Plaza Section elevations

Project: **Potts Hill Senior Living Village**

Project No: 17-048s

Client: Mushan Project Management

Scale: As shown @A1

Revision: D

Date: 2/09/2021

Drawing no: LA13

0 2 4 8 12m



TaylorBrammer

Taylor Brammer Landscape Architects Pty Ltd
218 Oxford Street, Woollahra NSW 2025
Tel: +61 2 9387 8855 Fax: +61 2 4267 4826
Email: sydney@taylorbrammer.com.au



EXISTING VEGETATION SCHEDULE

ID	BOTANICAL NAME	COMMON NAME	HEIGHT (m)	COMMENT
TREES RETAINED				
T1	<i>Eucalyptus moluccana</i>	Grey Box	17	
T2	<i>Eucalyptus tereticornis</i>	Red Gum	8	
T3	<i>Casuarina cunninghamiana</i>	She Oak	8	
T4	<i>Eucalyptus tereticornis</i>	Red Gum	5	
T5	<i>Casuarina cunninghamiana</i>	She Oak	4	
T6	<i>Eucalyptus tereticornis</i>	Red Gum	4	
T7	<i>Casuarina cunninghamiana</i>	She Oak	6	
T8	<i>Eucalyptus tereticornis</i>	Red Gum	6	
T9	<i>Eucalyptus tereticornis</i>	Red Gum	5	
T10	<i>Eucalyptus tereticornis</i>	Red Gum	18	
T11	<i>Eucalyptus microcorys</i>	Tallowood	18	
T28	<i>Eucalyptus moluccana</i>	Grey Box	14	
T22	<i>Eucalyptus tereticornis</i>	Red Gum	18	
T37	<i>Eucalyptus moluccana</i>	Grey Box	18	
T38	<i>Eucalyptus moluccana</i>	Grey Box	10	
T39	<i>Eucalyptus moluccana</i>	Grey Box	18	
T40	<i>Eucalyptus moluccana</i>	Grey Box	9	
T41	<i>Acacia saligna</i>	Wattle	4	
T42	<i>Angophora floribunda</i>	Rough Barked Apple	6	
T43	<i>Angophora floribunda</i>	Rough Barked Apple	5	
T44	<i>Angophora floribunda</i>	Rough Barked Apple	6	
T45	<i>Angophora floribunda</i>	Rough Barked Apple	7	
T46	<i>Angophora floribunda</i>	Rough Barked Apple	7	
T47	<i>Angophora floribunda</i>	Rough Barked Apple	5	
T48	<i>Eucalyptus scoparia</i>		8	
T49	<i>Angophora floribunda</i>	Rough Barked Apple	7	
T50	<i>Angophora floribunda</i>	Rough Barked Apple	8	
T51	<i>Angophora floribunda</i>	Rough Barked Apple	6	
T52	<i>Angophora floribunda</i>	Rough Barked Apple	6	
T53	<i>Angophora floribunda</i>	Rough Barked Apple	10	
T54	<i>Angophora floribunda</i>	Rough Barked Apple	5	
T55	<i>Angophora floribunda</i>	Rough Barked Apple	6	
T56	<i>Angophora floribunda</i>	Rough Barked Apple	10	
T57	<i>Angophora floribunda</i>	Rough Barked Apple	6	
T58	<i>Angophora floribunda</i>	Rough Barked Apple	6	
T59	<i>Melaleuca armillaris</i>	Honey Myrtle	10	
T60	<i>Angophora floribunda</i>	Rough Barked Apple	8	
T66	<i>Casuarina cunninghamiana</i>	She Oak	8	
T67	<i>Corymbia maculata</i>	Spotted Gum	7	
T68	<i>Corymbia maculata</i>	Spotted Gum	7	
T69	<i>Melaleuca styphelioides</i>	Prickly Paperbark	4	
T70	<i>Eucalyptus saligna</i>	Blue Gum	7	
T71	<i>Paraserianthes lophantha</i>	Brush Wattle	6	
T72	<i>Paraserianthes lophantha</i>	Brush Wattle	8	
T73	<i>Paraserianthes lophantha</i>	Brush Wattle	4	
T74	<i>Paraserianthes lophantha</i>	Brush Wattle	5	
T103	<i>Tristaniaopsis laurina</i>	Water Gum	3	
T104	<i>Tristaniaopsis laurina</i>	Water Gum	3	
T105	<i>Tristaniaopsis laurina</i>	Water Gum	3	
T106	<i>Tristaniaopsis laurina</i>	Water Gum	3	
T107	<i>Tristaniaopsis laurina</i>	Water Gum	3	
T112	<i>Tristaniaopsis laurina</i>	Water Gum	3	
T113	<i>Tristaniaopsis laurina</i>	Water Gum	3	
T114	<i>Tristaniaopsis laurina</i>	Water Gum	3	
T115	<i>Tristaniaopsis laurina</i>	Water Gum	3	
T116	<i>Tristaniaopsis laurina</i>	Water Gum	3	
T117	<i>Tristaniaopsis laurina</i>	Water Gum	3	
T118	<i>Tristaniaopsis laurina</i>	Water Gum	3	
T119	<i>Tristaniaopsis laurina</i>	Water Gum	3	
T120	<i>Tristaniaopsis laurina</i>	Water Gum	3	
T123	<i>Tristaniaopsis laurina</i>	Water Gum	3	
T124	<i>Tristaniaopsis laurina</i>	Water Gum	3	
T125	<i>Tristaniaopsis laurina</i>	Water Gum	7	
T126	<i>Tristaniaopsis laurina</i>	Water Gum	5	

TREES REMOVED				
T12	<i>Eucalyptus microcorys</i>	Tallowood	18	Remove to accommodate works
T13	<i>Eucalyptus microcorys</i>	Tallowood	18	Remove to accommodate works
T14	<i>Eucalyptus microcorys</i>	Tallowood	18	Remove to accommodate works
T15	<i>Eucalyptus microcorys</i>	Tallowood	-	Remove to accommodate works
T16	<i>Eucalyptus microcorys</i>	Tallowood	6	Remove to accommodate works
T17	<i>Paraserianthes lophantha</i>	Brush Wattle	7	Remove to accommodate works
T18	<i>Eucalyptus microcorys</i>	Tallowood	7	Remove to accommodate works
T19	<i>Eucalyptus microcorys</i>	Tallowood	5	Remove to accommodate works
T20	<i>Eucalyptus microcorys</i>	Tallowood	6	Remove to accommodate works
T21	<i>Eucalyptus microcorys</i>	Tallowood	7	Remove to accommodate works
T23	<i>Acacia saligna</i>	Wattle	6	Remove to accommodate works
T24	<i>Eucalyptus moluccana</i>	Grey Box	6	Remove to accommodate works
T25	<i>Eucalyptus moluccana</i>	Grey Box	6	Remove to accommodate works
T26	<i>Eucalyptus moluccana</i>	Grey Box	6	Remove to accommodate works
T27	<i>Eucalyptus moluccana</i>	Grey Box	6	Remove to accommodate works
T29	<i>Casuarina cunninghamiana</i>	She Oak	7	Remove to accommodate works
T30	<i>Eucalyptus moluccana</i>	Grey Box	4	Remove to accommodate works
T31	<i>Eucalyptus moluccana</i>	Grey Box	4	Remove to accommodate works
T32	<i>Eucalyptus moluccana</i>	Grey Box	4	Remove to accommodate works
T33	<i>Eucalyptus tereticornis</i>	Red Gum	4	Remove to accommodate works
T34	<i>Paraserianthes lophantha</i>	Brush Wattle	6	Remove to accommodate works
T35	<i>Eucalyptus moluccana</i>	Grey Box	6	Remove to accommodate works
T36	<i>Eucalyptus moluccana</i>	Grey Box	6	Remove to accommodate works
T61	<i>Melaleuca styphelioides</i>	Prickly Paperbark	5	Remove to accommodate works
T62	<i>Melaleuca styphelioides</i>	Prickly Paperbark	5	Remove to accommodate works
T63	<i>Melaleuca styphelioides</i>	Prickly Paperbark	5	Remove to accommodate works
T64	<i>Melaleuca styphelioides</i>	Prickly Paperbark	5	Remove to accommodate works
T65	<i>Melaleuca armillaris</i>	Honey Myrtle	3	Remove to accommodate works
T75	<i>Acacia saligna</i>	Wattle	4	Remove to accommodate works
T76	<i>Paraserianthes lophantha</i>	Brush Wattle	6	Remove to accommodate works
T77	<i>Paraserianthes lophantha</i>	Brush Wattle	6	Remove to accommodate works
T78	<i>Paraserianthes lophantha</i>	Brush Wattle	6	Remove to accommodate works
T79	<i>Paraserianthes lophantha</i>	Brush Wattle	6	Remove to accommodate works
T80	<i>Paraserianthes lophantha</i>	Brush Wattle	6	Remove to accommodate works
T81	<i>Paraserianthes lophantha</i>	Brush Wattle	6	Remove to accommodate works
T82	<i>Paraserianthes lophantha</i>	Brush Wattle	6	Remove to accommodate works
T83	<i>Paraserianthes lophantha</i>	Brush Wattle	6	Remove to accommodate works
T84	<i>Paraserianthes lophantha</i>	Brush Wattle	6	Remove to accommodate works
T85	<i>Paraserianthes lophantha</i>	Brush Wattle	6	Remove to accommodate works
T86	<i>Paraserianthes lophantha</i>	Brush Wattle	6	Remove to accommodate works
T87	<i>Paraserianthes lophantha</i>	Brush Wattle	6	Remove to accommodate works
T88	<i>Paraserianthes lophantha</i>	Brush Wattle	6	Remove to accommodate works
T89	<i>Paraserianthes lophantha</i>	Brush Wattle	6	Remove to accommodate works
T90	<i>Paraserianthes lophantha</i>	Brush Wattle	6	Remove to accommodate works
T91	<i>Paraserianthes lophantha</i>	Brush Wattle	6	Remove to accommodate works
T92				Tree on the adjoining site has been removed
T93				Tree on the adjoining site has been removed
T94				Tree on the adjoining site has been removed
T95				Tree on the adjoining site has been removed
T96				Tree on the adjoining site has been removed
T97				Tree on the adjoining site has been removed
T98				Tree on the adjoining site has been removed
T99	<i>Casuarina cunninghamiana</i>	She Oak	6	Remove to accommodate works
T100				Tree on the adjoining site has been removed
T101				Tree on the adjoining site has been removed
T102				Tree on the adjoining site has been removed
T108	<i>Tristaniaopsis laurina</i>	Water Gum	3	Remove to accommodate works
T109	<i>Tristaniaopsis laurina</i>	Water Gum	3	Remove to accommodate works
T110	<i>Tristaniaopsis laurina</i>	Water Gum	3	Remove to accommodate works
T111	<i>Tristaniaopsis laurina</i>	Water Gum	3	Remove to accommodate works
T121	<i>Tristaniaopsis laurina</i>	Water Gum	3	Remove to accommodate works
T122	<i>Tristaniaopsis laurina</i>	Water Gum	3	Remove to accommodate works
T127	<i>Eucalyptus moluccana</i>	Grey Gum	18	Remove to accommodate works
T128	<i>Eucalyptus moluccana</i>	Grey Gum	18	Remove to accommodate works
T129	<i>Eucalyptus moluccana</i>	Grey Gum	7	Remove to accommodate works
T130	<i>Eucalyptus moluccana</i>	Grey Gum	7	Remove to accommodate works
T131	<i>Eucalyptus moluccana</i>	Grey Gum	7	Remove to accommodate works
T132	<i>Eucalyptus moluccana</i>	Grey Gum	7	Remove to accommodate works
T133	<i>Eucalyptus moluccana</i>	Grey Gum	7	Remove to accommodate works

Tree Removal and Retention Plan

Project: Potts Hill Senior Living Village

Scale: 1:500@A1

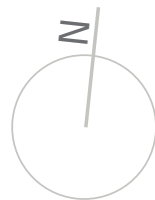
Project No: 17-048s

Revision: D

Client: Mushan Project Management

Date:2/09/2021

Drawing no: LA14

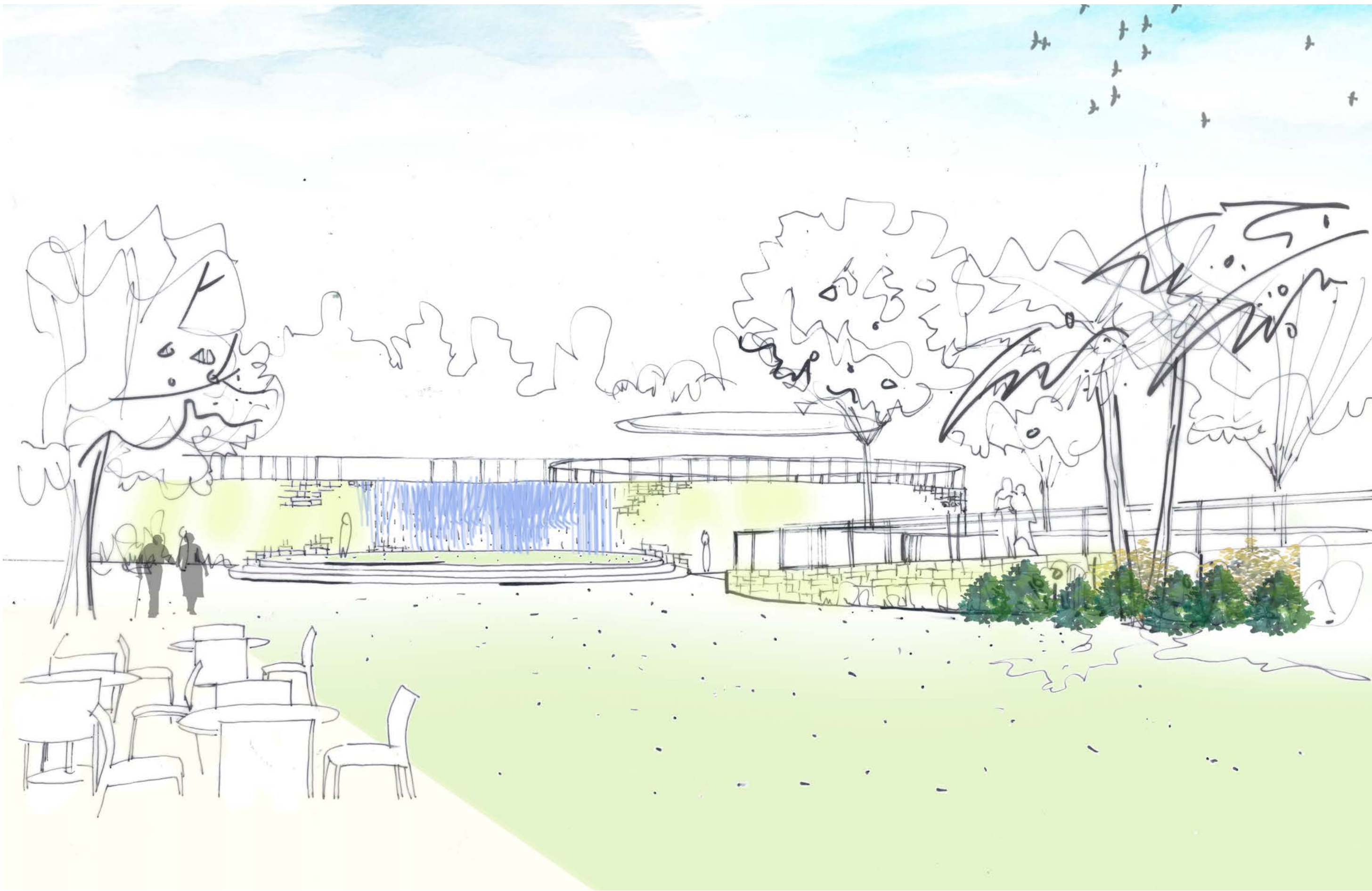


TaylorBrammer

Taylor Brammer Landscape Architects Pty Ltd
218 Oxford Street, Woollahra NSW 2025
Tel: +61 2 9387 8855 Fax: +61 2 4267 4826
Email: sydney@taylorbrammer.com.au

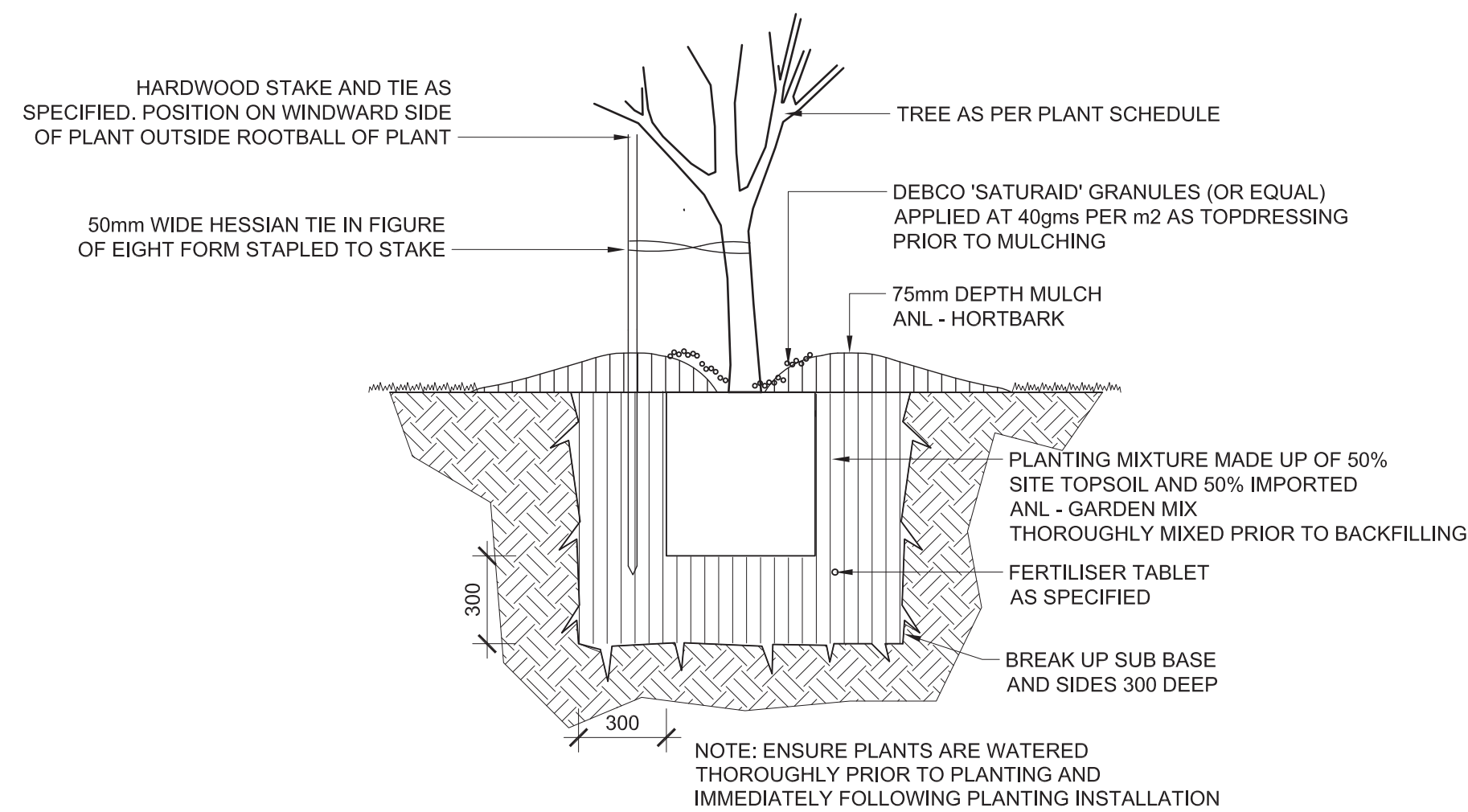


Illustrative Perspective- Entrance Plaza

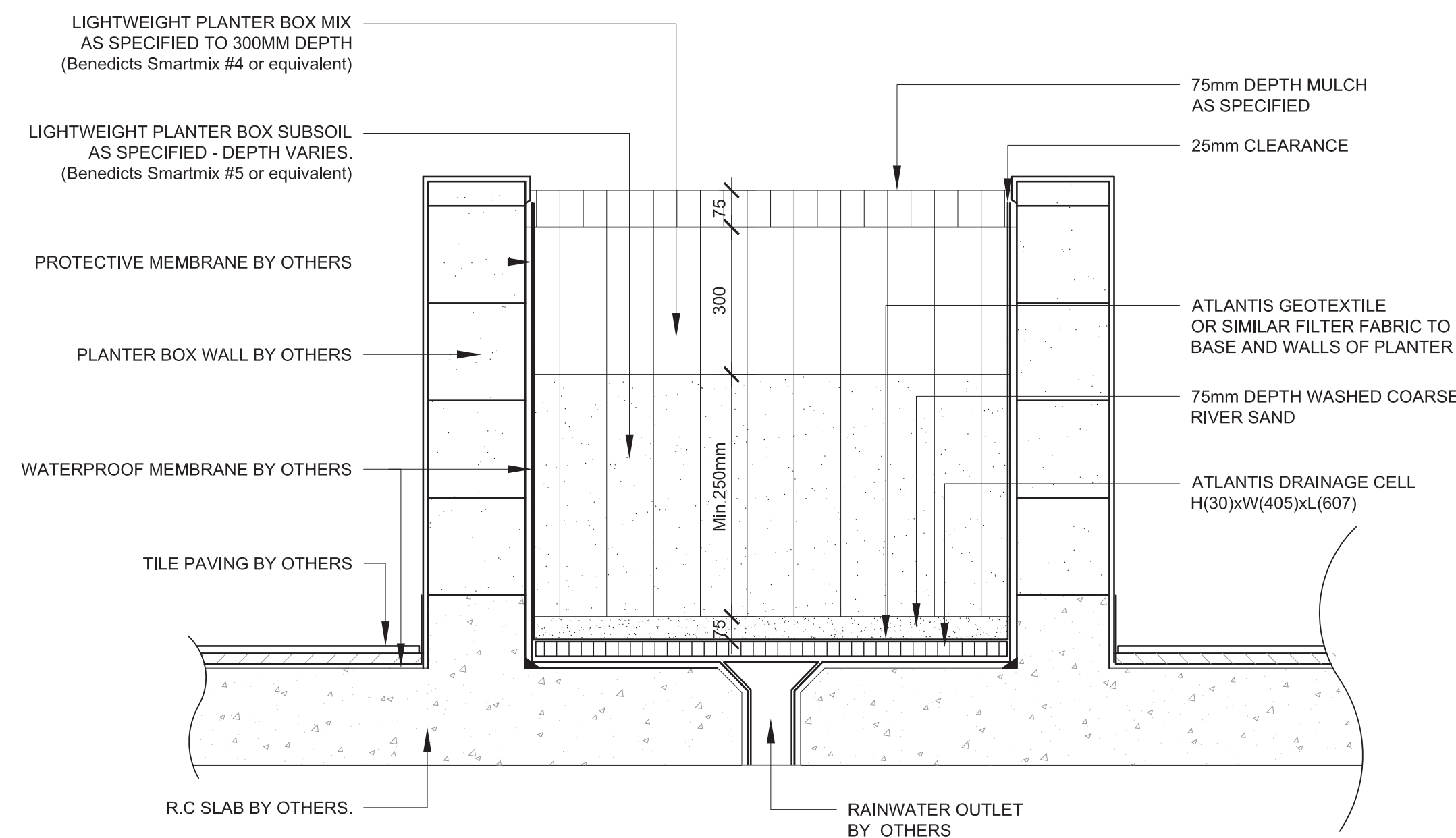


Illustrative Perspective- Village Centre

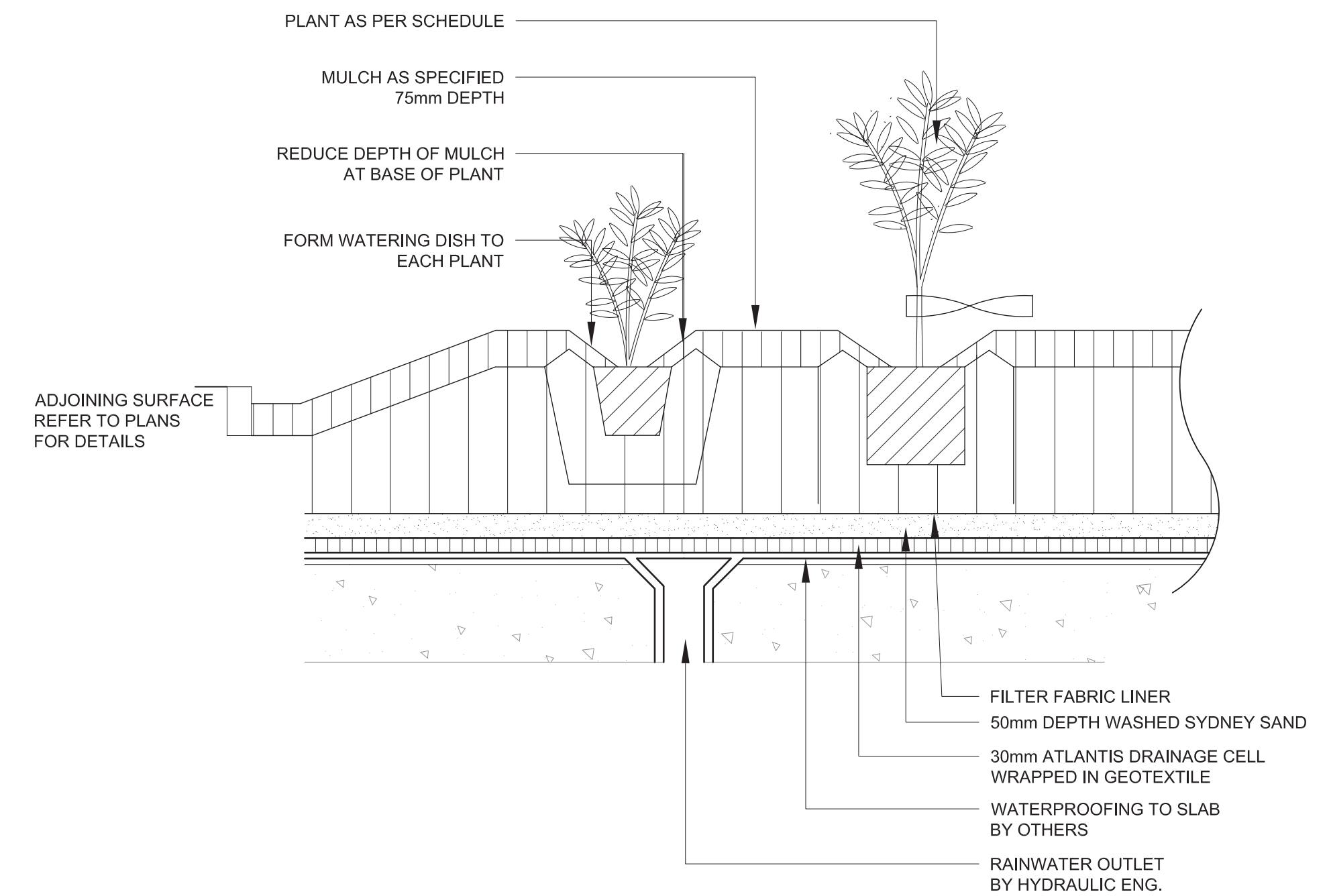
Illustrative Perspectives



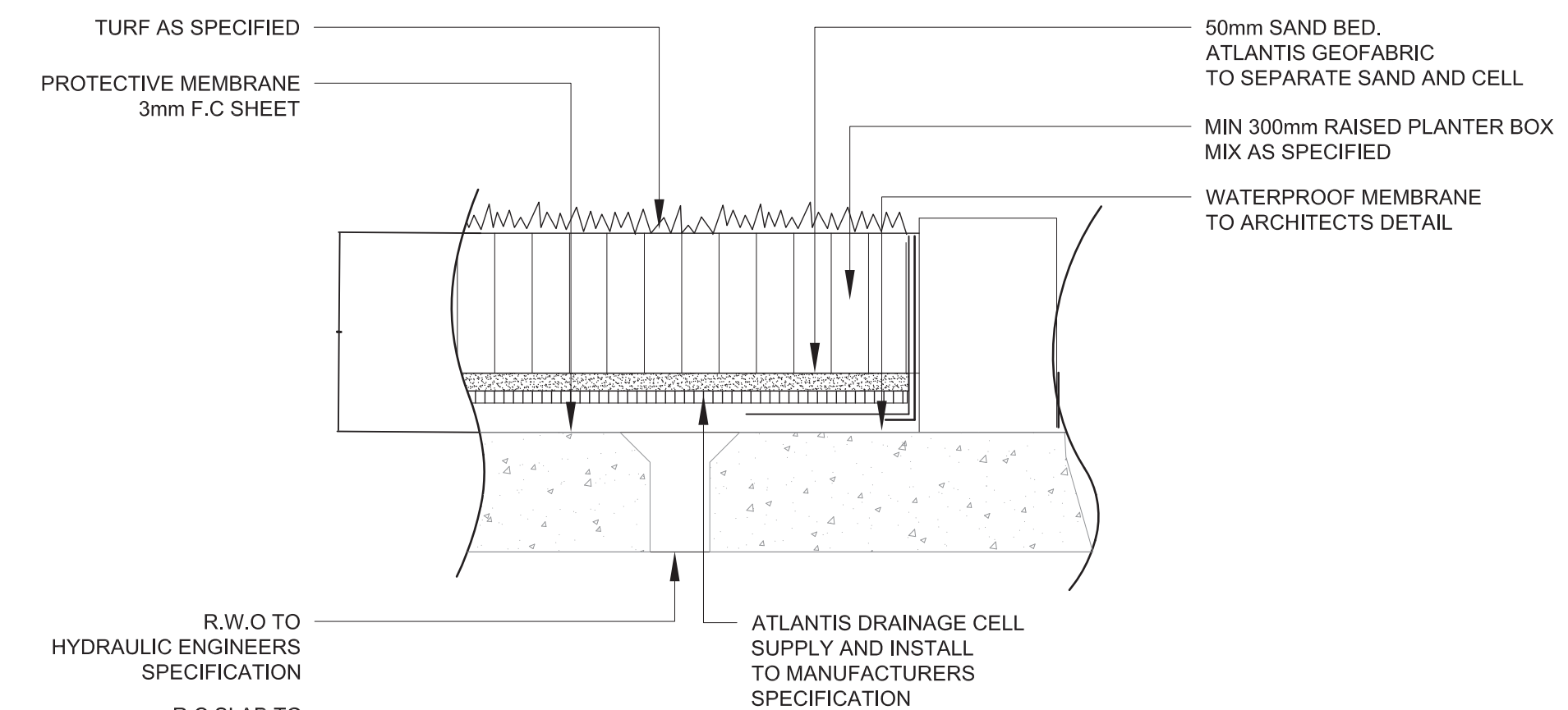
1 TREE PLANTING
TYPICAL SECTION 1:20



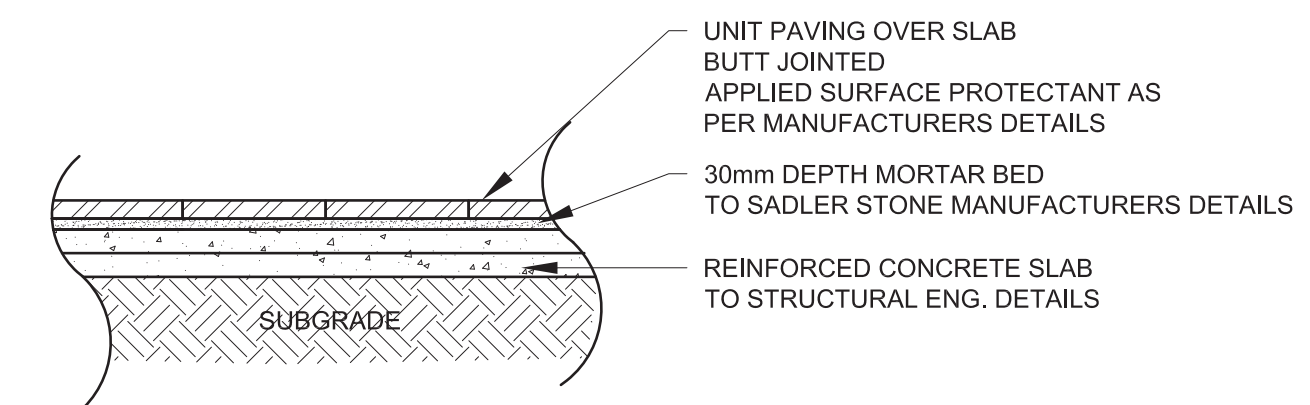
3 RAISED PLANTER BOX
TYPICAL SECTION 1:10



2 MASS PLANTING ON-SLAB PLANTER DRAINAGE
TYPICAL SECTION 1:10



4 TURF ON SLAB
TYPICAL SECTION 1:10



5 PAVING OVER SLAB
SECTION 1:20

Typical Details

Project: **Potts Hill Senior Living Village**

Project No: 17-048s

Client: Mushan Project Management

Revision: D

Date: 2/09/2021

Drawing no: LA13

TaylorBrammer

Taylor Brammer Landscape Architects Pty Ltd
218 Oxford Street, Woollahra NSW 2025
Tel: +61 2 9387 8855 Fax: +61 2 4267 4826
Email: sydney@taylorbrammer.com.au